



Leadership Orange: Exceptional Student Education

November 10, 2023

**OC
PS** | Orange County
Public Schools

1

Exceptional Student Education Senior Leadership Team

Wendy Ivory
Executive Leader

Sylvia Schaffer
Senior Director

Ian Gesundheit
Principal Leader

Tajuana Lee-Wenze
Senior Director

Leigh Austin
Director

Katie Boyd
Director

Carmen McNealy
Director

Tricia Phillip-Magee
Director

Elizabeth Padilla
Director

Michelle Rutilius
Director

Danielle Barney
Senior Administrator

Milana Bisceglia
Senior Administrator

Brittany Mills
Senior Administrator

Victoria Singh
Senior Administrator

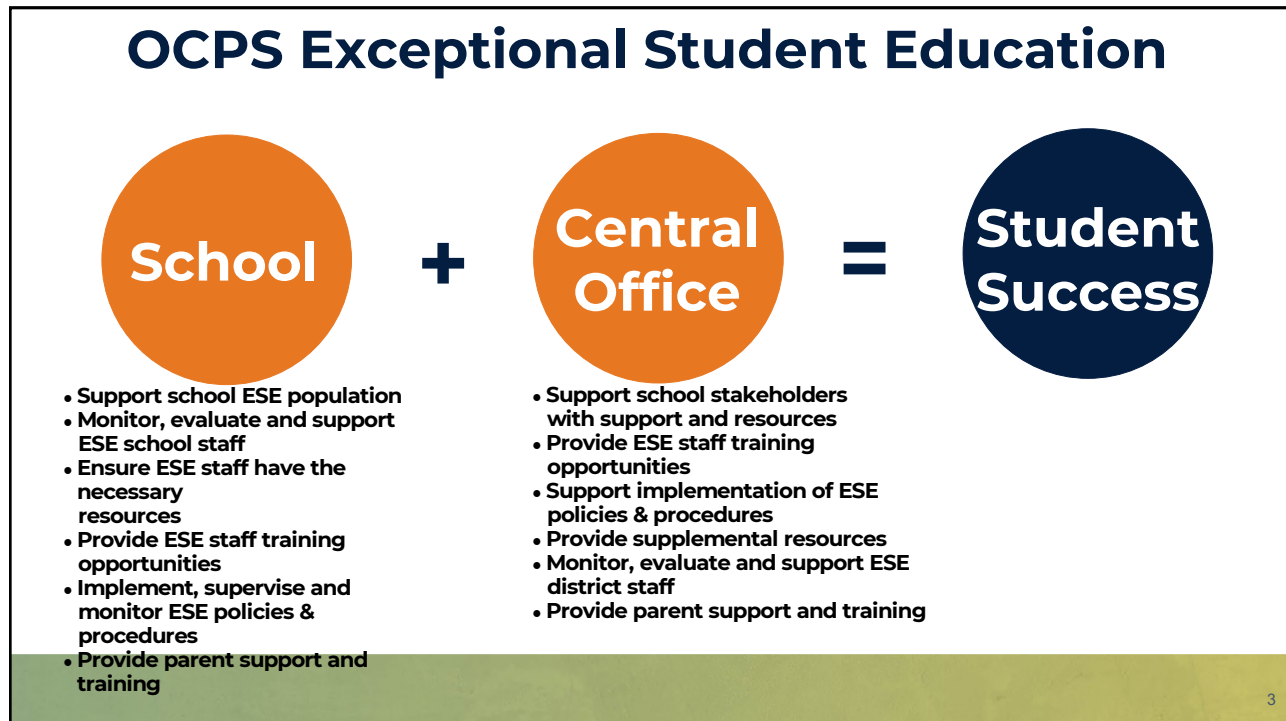
Terranesha Young
Senior Administrator

Kathy Anderson
Senior Administrator

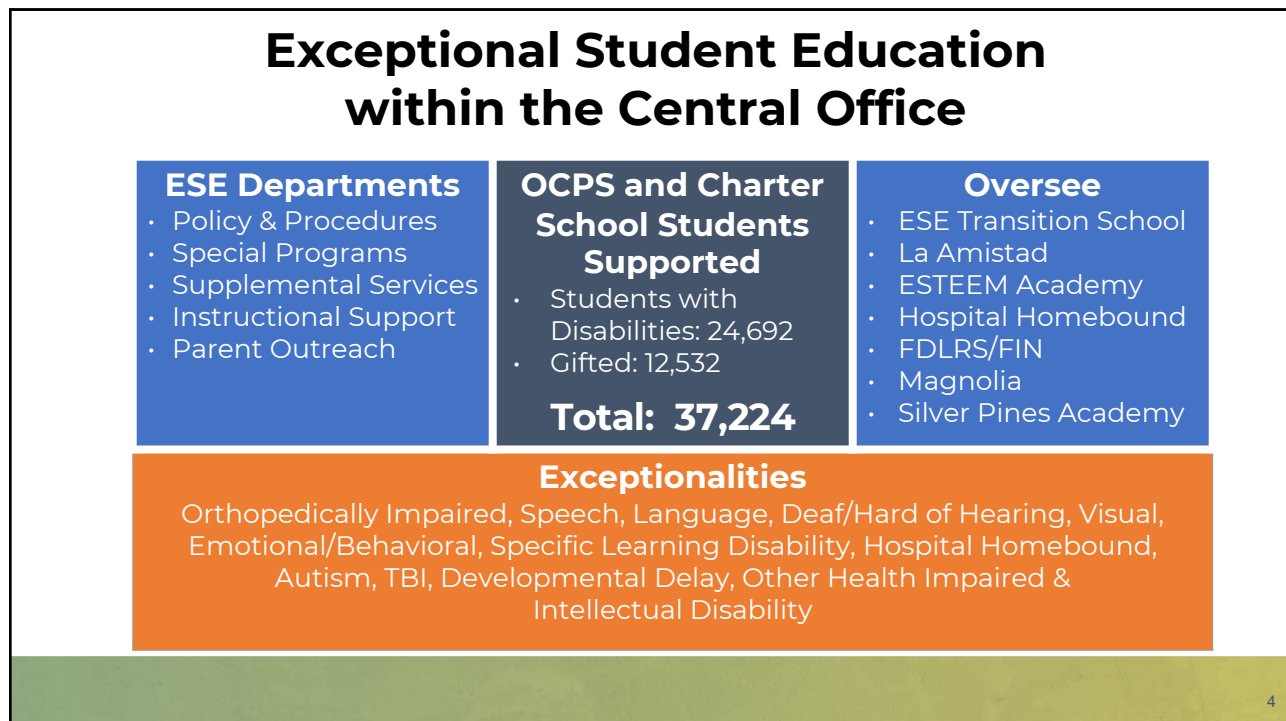
Samuel Davis
Senior Administrator

2

2



3



4

Instructional Support for Mild to Moderate Disabilities

Partnerships

- Community Coordinated Care for Children (4C)
- Early Learning Coalition of Orange County (ELCOC)
- Florida Diagnostic and Learning Resources System (FDLRS)
- Florida Inclusion Network (FIN)
- Selected childcare providers

What We Do

- Professional Learning for administrators, general educators, learning strategies teachers and support facilitators (*Facilitate, Monitor, Support*)
- Develop CRM's for Learning Strategies
- Respond to requests for support
- Track and analyze learning data for SWD's

Professional Learning

- BPIE & SIP Alignment
- Peers as Partners in Learning
- Inclusive Scheduling
- Collaborative Teaching & Planning
- Universal Design for Learning (UDL)
- SIM Strategies & Content Enhancement Routines
- Person First Language & Disability Awareness
- Community of Practice

Goal

To narrow the achievement gap for students with disabilities.

5

5

Exceptional Student Education Outreach

Support for Individual Families

- Respond to Parent/Teacher Support Tickets
- Resources
- Individual ESE family support
- Community Connections
- Peer to Peer parent support

District Support

- Monthly Mini Parent Academies
- Parent Focus Groups
- ESE Social Media/Families Toolkit
- Annual ESE Big IDEA Conference
- External Agency Partnerships
- Agency Resource Fairs Provided to Schools and Families
- Community Outreach

Community Partnerships

- Autism Society of Greater Orlando
- Nathaniel's Hope
- Project Ten
- Bright Feats
- Abilities Group
- Parent Education Network (PEN)
- Center for Autism & Related Disabilities (CARD)
- Florida Diagnostic and Learning Resources System (FDLRS)

Goal

The ESE Parent Outreach Team is dedicated to bridging the gaps between families, schools, and the community to provide support for students with disabilities.

6

ESE Behavior & Instructional Support for Significant Disabilities

Support Team	Types of Support	Examples of Professional Development
<ul style="list-style-type: none"> Behavior Analysts Behavior Coaches Instructional Coaches Program Assistants 	<ul style="list-style-type: none"> Observations Recommendations Modeling Providing professional development Development of CRMs for 90 different B.E.S.T. Access Points for all subjects grades K-12 	<ul style="list-style-type: none"> Access Points Behavior Strategies Classroom Management EBD Gifted Autism Paraprofessional Strategies

Purpose:

To help all schools within OCPS and Charter Schools with behavioral and instructional strategies for students with significant disabilities.

7

State Approved Gifted Service Delivery Models

Elementary	Middle	High
<ul style="list-style-type: none"> Full-time Model Gifted Clusters Home-school Based Resource Room Center-school Based Resource Room Subject-Area Academic Classroom 	<ul style="list-style-type: none"> Gifted Academic Classes Gifted Clusters for Academic Classes Gifted Elective Classes 	<ul style="list-style-type: none"> Gifted Academic Classes Gifted Clusters for Academic Classes Gifted Elective Classes Consultative Services

School Principals select the most appropriate service delivery model to meet the needs of the students and school based on number of students and teacher certification.

[Gifted Service Delivery Models](#)

8

ESE Special Programs

Special Programs SCOPE

- **Transitions**
 - Preschool to kindergarten
 - Elementary to middle school
 - Middle to high school
 - High school to post high school
- **Preschool Diagnostic Intervention Services**

Special Programs School Support

- PK ESE instruction
- Transition support
- Career Placement
- HS High Tech
- Community Based Vocational Education
- Life Skills Lab

9

9

ESE Special Programs

PDIS School Support

Sr. Administrator

- PK ESE teacher support
- PK ESE progress
- 1500+ evaluations annually
- PK ESE parent support

ESE Facilities Representative

- ESE self contained classroom needs
- Life Skills Lab MS/HS
- Work Experience Lab MS & HS
- Exploration room

10

10

ESE Policy & Procedures



**IDEA
Compliance**



**Section 504
Compliance**



**Dispute
Resolution**

11

11

ESE Policy and Procedures Charter & Non Public



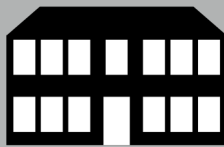
PIP



**Non-public
Services**



ESE Inventory



Charter Schools



**Family
Empowerment
Scholarships**



ESE State Reporting

12

12

Health Services

- Supports school and community health
- State mandated screenings:
- Vision, Hearing, BMI, Scoliosis
- Communicable/Infectious Disease support
- School clinic support
- Job embedded professional development
- Student health plans



13

13

Health Services Community Outreach



- Florida Department of Health in Orange County
- Winter Park Health Foundation
- Orlando Health
- Advent Health
- Nemours Foundation
- Universities/Colleges such as University of Central Florida, Herzing University, and Valencia Community College

- Back to school immunization events
- Fall Flu vaccines
- Spring Tdap - rising 7th grade students
- Parent Academies
- FDOH partnership
- HCA CEU event

14

14

16

16

Our Promise. Your Support. Their Success.
Our Promise. Your Support. Their Success.
Our Promise. Your Support. Their Success.

